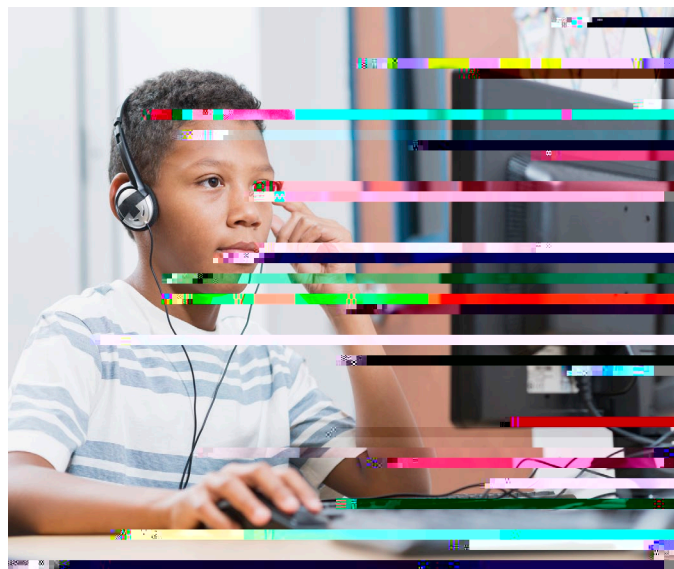




**ACCESS for ELLs is an English language proficiency test that measures students' academic English language skills.**



## ELL

English Language Learners (ELLs) are students who are in the process of learning English. They may have limited proficiency in English and may need additional support to succeed in school. ACCESS for ELLs is a state-approved English language proficiency test that measures students' academic English language skills. The test is designed to assess students' listening, speaking, reading, and writing skills. ACCESS for ELLs is used to determine a student's English language proficiency level and to monitor their progress over time. The test is also used to identify students who may need additional support and to evaluate the effectiveness of language instruction programs.

## Language Domain

ACCESS for ELLs is a state-approved English language proficiency test that measures students' academic English language skills. The test is designed to assess students' listening, speaking, reading, and writing skills. ACCESS for ELLs is used to determine a student's English language proficiency level and to monitor their progress over time. The test is also used to identify students who may need additional support and to evaluate the effectiveness of language instruction programs.

